

# Key Investor Information

This document provides you with key investor information about this fund. It is not marketing material. The information is required by law to help you understand the nature and the risks of investing in this fund. You are advised to read it so you can make an informed decision about whether to invest.

ISIN:  
GB0031383390

## Allianz UK & European Investment Funds - Allianz Gilt Yield Fund Share Class I (Income) (GBP)

Managed by Allianz Global Investors GmbH, part of Allianz Global Investors

### Objectives and Investment Policy

The objective of the Fund is to maximise total return primarily through investment in British Government Securities.

Investors should be aware that the Fund's capital is at risk and there is no guarantee that the Fund will achieve its investment objective over any particular period or at all.

We may invest in gilts, deposits, money market instruments, derivatives, collective investment schemes. We may invest more than 35% of the Fund's value in debt securities issued by the UK. We may use derivative instruments such as futures, options, options on swaps and swap agreements (interest rate swaps). These derivative instruments may be used for hedging

purposes and/or for investment purposes. This may increase the risk of capital loss.

Benchmark of the fund is FTSE UK Govt All Stocks.

You may redeem shares of the fund usually on each business day at 12:00.

We usually distribute the income of the fund on a semiannual basis.

Recommendation: this fund may not be appropriate for investors who plan to withdraw their money within 3 years.

### Risk and Reward Profile



This risk and reward indicator is based on past performance data. It may not be a reliable indication of the future risk profile of the fund.

The categorisation of the fund is not guaranteed and may change in the future.

Even the lowest category 1 does not mean a risk-free investment.

### Why is the fund in this category?

Funds of category 4 have shown in the past a medium volatility. The volatility describes how much the value of the fund went up and down in the past. The units of a fund of category 4 might be subject to medium price fluctuations based on the historical volatilities observed.

We may invest directly or indirectly a significant portion of the fund into bonds or money markets instruments. If the issuer may fall into insolvency or may suffer economical problems the interest and/or the capital of these assets may not or may not be completely paid and/or the price of the assets may drop.

## Charges

These charges are used to pay the costs of running the fund, including the costs of marketing and selling. They reduce the potential growth of your investment.

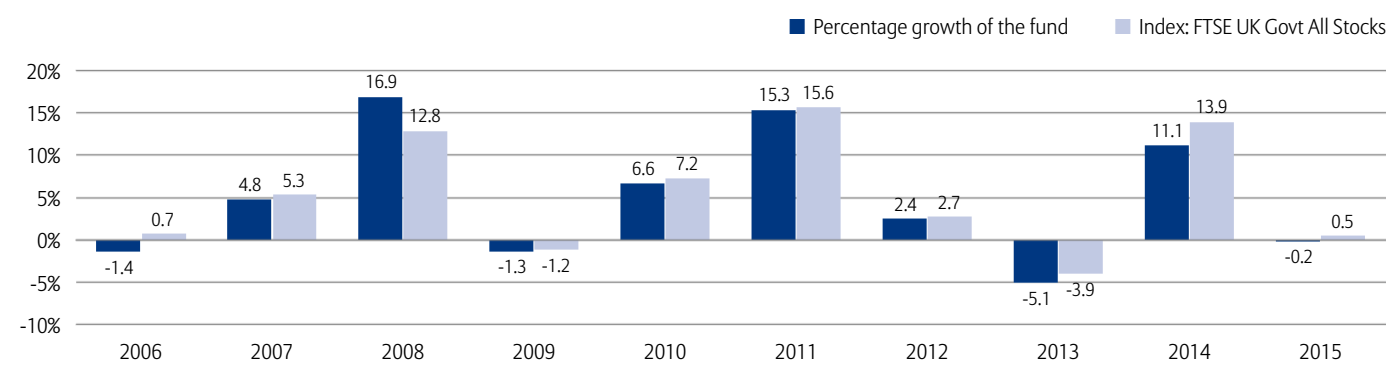
| One-off charges deducted before or after you invest   |       |
|---|-------|
| Entry Charge  | 0.00% |
| Exit Charge   | 0.00% |
| This is the maximum charge that might be taken out of your money before it is invested or before the proceeds of your investments are paid out. |       |
| Charges taken from the fund over a year   |       |
| Ongoing Charges   | 0.33% |

The entry and exit charges shown are maximum figures. In some cases you might pay less – you can find actual entry and exit charges from your financial adviser.

The ongoing charges shown are based on the fund's last financial year ending 31.08.2015. It may vary from year to year. It does not include transaction costs incurred when we buy or sell assets for the fund.

You will find more details about the calculation of the charges by checking the respective part of the prospectus.

## Past Performance



Past performance is not a reliable guide to future performance.

The past performance shown here takes account of all charges and costs with the exception of the entry and exit charge.

The fund was launched in 2002.

The performance of the fund is calculated in GBP.

## Practical Information

Allianz UK & European Investment Funds has a number of different Funds. The assets and liabilities of each Fund are segregated by law.

Depository: J.P. Morgan Europe Limited.

You may obtain free of charge the prospectus, the latest annual and semi-annual reports in English from Allianz Global Investors GmbH, 199 Bishopsgate, London EC2M 3TY, United Kingdom or at [www.allianzgi.co.uk](http://www.allianzgi.co.uk).

The unit prices as well as further information on the fund (including other shareclasses of the fund) are available online at [www.allianzgi.co.uk](http://www.allianzgi.co.uk).

Information on the current remuneration policy, including a description of the calculation methods for remuneration and benefits awarded to certain groups of employees, and details of the persons responsible for awarding such allocations, is available at [www.allianzgi-regulatory.eu/remuneration](http://www.allianzgi-regulatory.eu/remuneration) and as a paper copy upon request, without charge.

The fund is subject to tax laws and regulations in the UK. This might have an impact on your personal tax position. For further details, please speak to your tax advisor.

Allianz Global Investors GmbH may be held liable solely on the basis of any statement contained in this document that is misleading, inaccurate or inconsistent with the relevant parts of the prospectus for the fund.

This fund is authorised in the UK and regulated by The Financial Conduct Authority. Allianz Global Investors GmbH is authorised in Germany as a UCITS investment management company and as an AIF investment management company, subject to the provisions of the Investment Code (Kapitalanlagegesetzbuch - KAGB), and is regulated by the Bundesanstalt für Finanzdienstleistungsaufsicht (BaFin). Allianz Global Investors GmbH has established a branch in the United Kingdom - Allianz Global Investors GmbH, UK branch - which is subject to limited regulation by the Financial Conduct Authority.

The key investor information is accurate as at 17.02.2016.